

Mining and Metallurgy Regions EU (MIREU)

SLO WORKSHOP 1

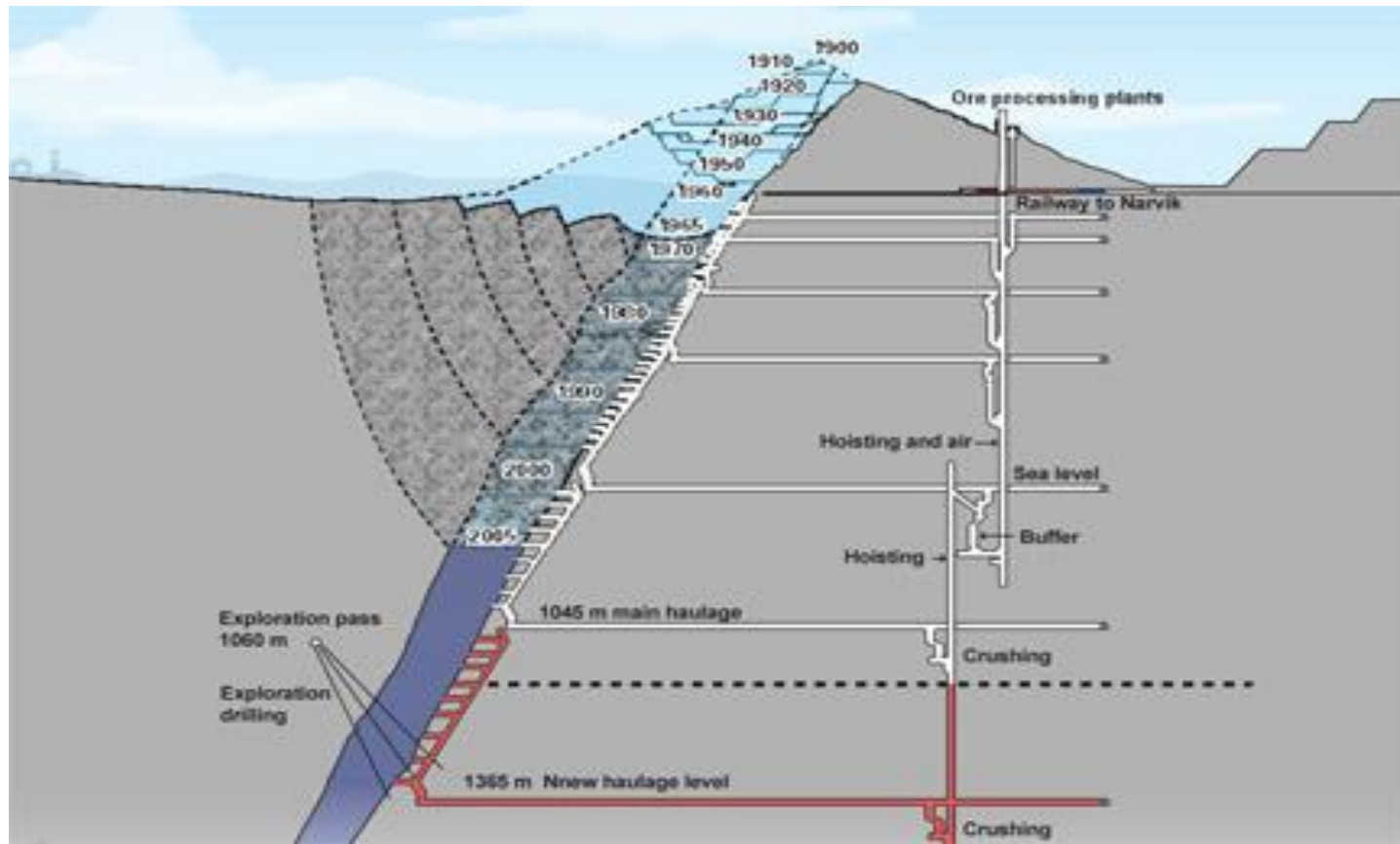
Linking SLO and Sustainability: challenges in Europe and lessons from abroad

8-9 May 2018 Rovaniemi, Finland



Tracks and cracks in the Arctic

Lars-Anders Baer





Mining in Sápmi - Lapland

- Nasafjäll 1630
- Silbatjokko 1650
- 1673 Mining Act
- 1700 The iron ore was discovered in Kiruna by a Sámi landowner
- The 1723 Mining Act
- The mining operations in Kiruna started 1898 when the railroad was opened to Kiruna and Narvik
- 1900 - The name of the new town became "kiruna" and modern city plan was adopted.
- The Kiruna city council made the final decision to move the town 2014



The track

- Exploration and Mining in Finland's Protected Areas, the Sami Homeland and the Reindeer Herding Area
- Guide MTI Publications/2007
- Ökad samverkan mellan rennäring och gruvnäring 2016/(Increased cooperation between reindeer herding and mining.)



Challenges

